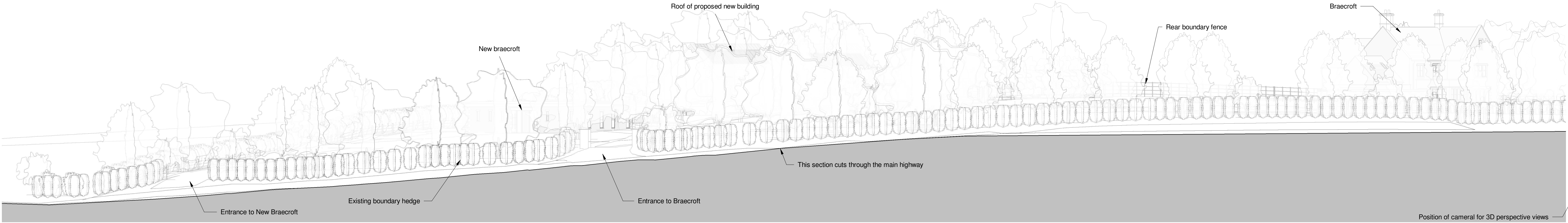
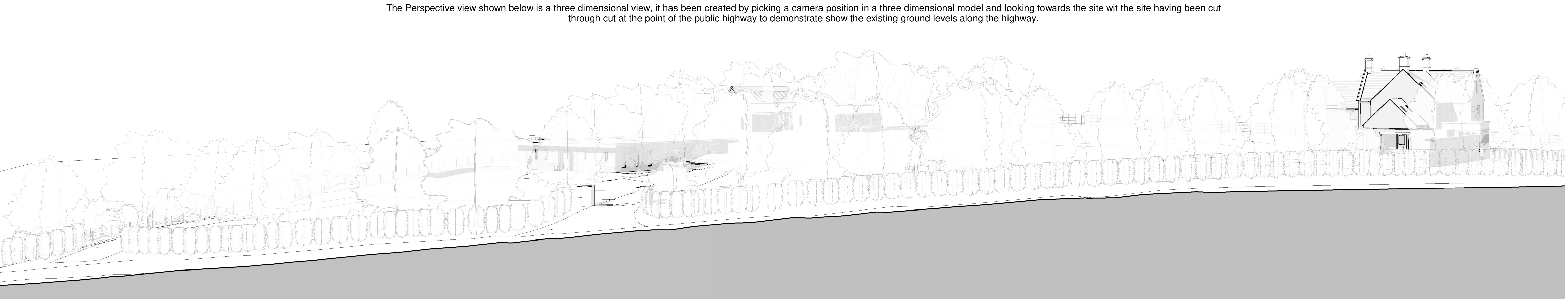


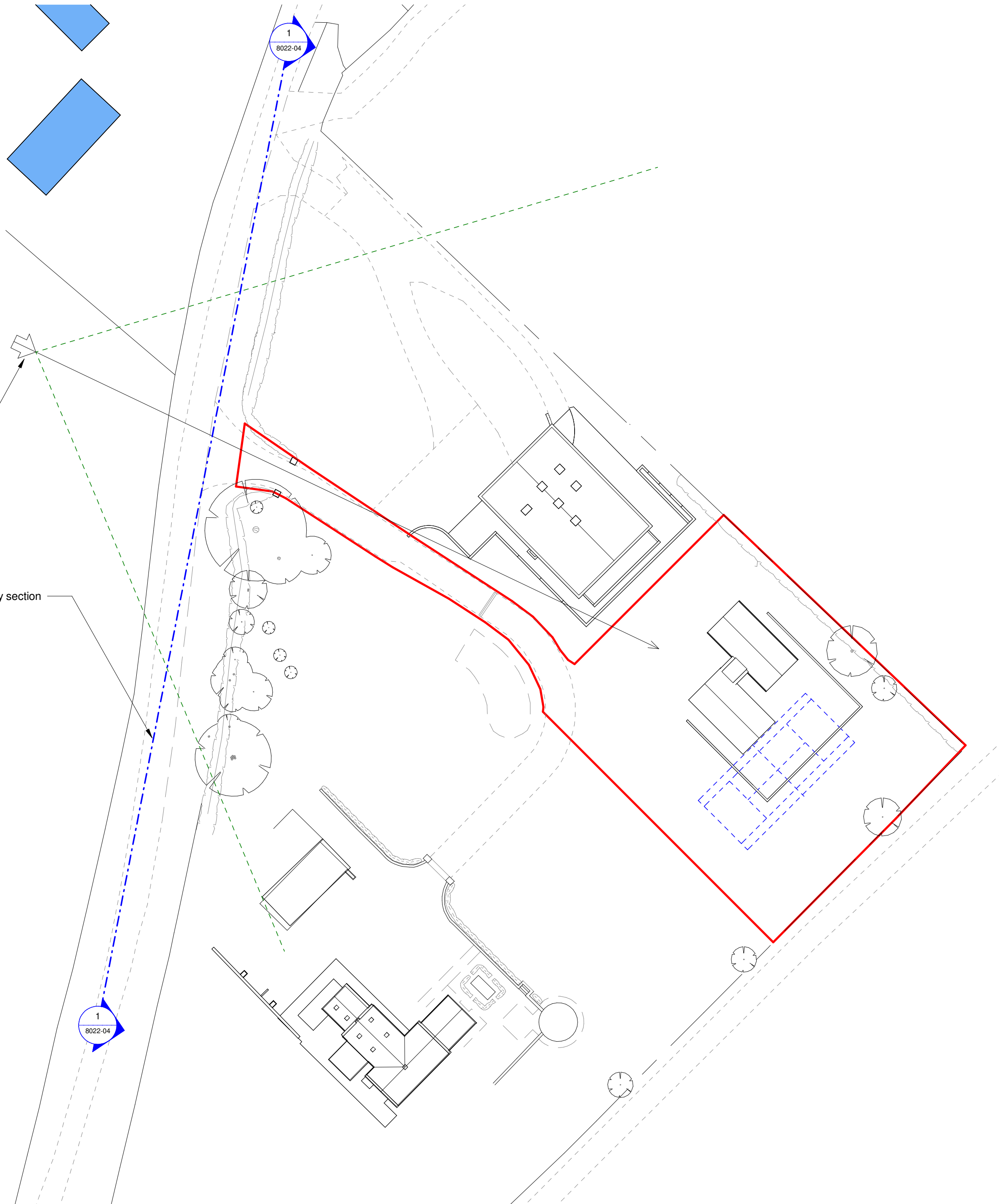
Critical note: Within the views shown below all planting (trees, bushes and hedgerows) Have been set to a partial transparency of 20% allowing some element of seeing through the trees to give a more realistic assessment of the site



Highway Section This view is a two dimensional scaled view of the entire site taken by cutting through the public highway all that will shown to scale and taken from top of graphical survey
1 : 200



Street Perspective View point / Camera level set at 2.0m above highway



Section Key
1 : 500